



# Fall in Love With City Place

THE TREYMORE  
— at —  
CITY PLACE



## Accommodations

- Alarm System
- W/D Connections
- Private Patio/ Balcony
- ADA Compliant
- OPTIONAL
- STANDARD
- Garage
- Covered Parking
- Extra Storage
- Built in Bookshelves
- Fireplace (in select units)

## Available Services & Amenities

- Laundry Facilities
- Gated Pet Park
- Swimming Pool
- Gated Entrance
- Fitness Room
- Business Center
- Accessible to Dart Rail & Bus Service
- Located less than 5 miles from Downtown Dallas

Email: [tremorecpmgr@carletonms.com](mailto:tremorecpmgr@carletonms.com)

Professionally Managed by



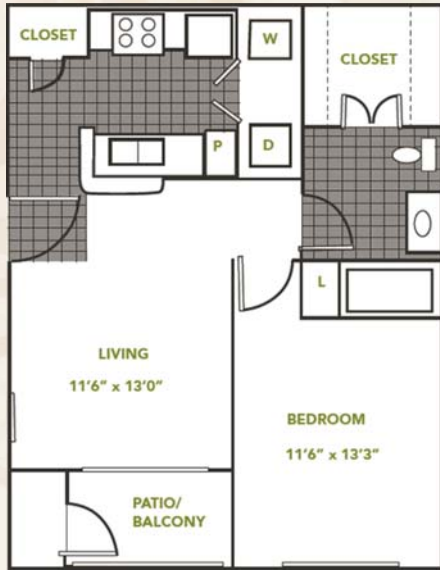
[tremorecityplace.com](http://tremorecityplace.com)

2101 N Haskell Ave  
Dallas, TX 75204

(214) 861-1501.

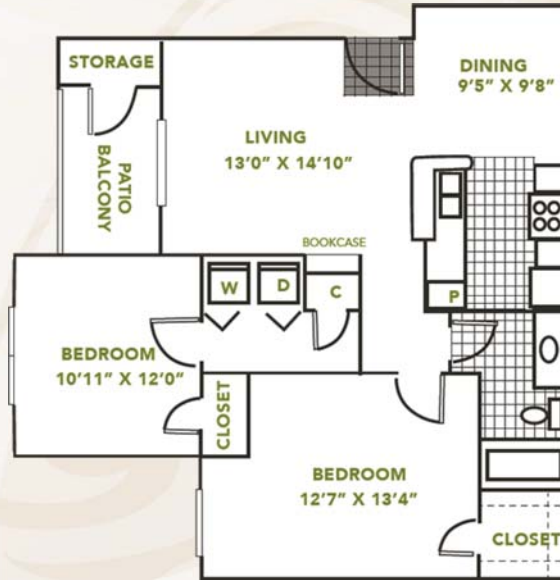
Fax: (214) 861- 1507

# THE MADISON



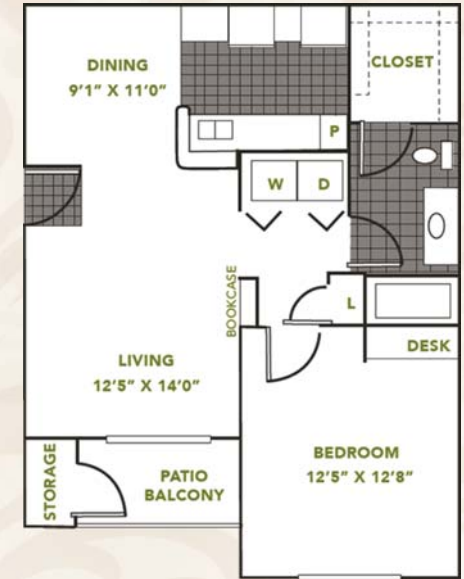
RENT \_\_\_\_\_ 1 Bedroom / 1 Bath  
 DEPOSIT \_\_\_\_\_ 632 Sq. Ft.\*

# THE BRENLIN



RENT \_\_\_\_\_ 2 Bedroom / 1 Bath  
 DEPOSIT \_\_\_\_\_ 632 Sq. Ft.\*

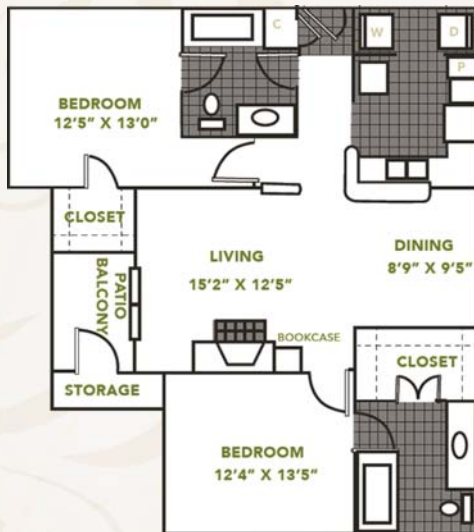
# THE DAVENPORT



RENT \_\_\_\_\_ 1 Bedroom / 1 Bath  
 DEPOSIT \_\_\_\_\_ 727 Sq. Ft.\*

\*Square footage is approximate Actual floorplans may vary

# THE FAIRFAX



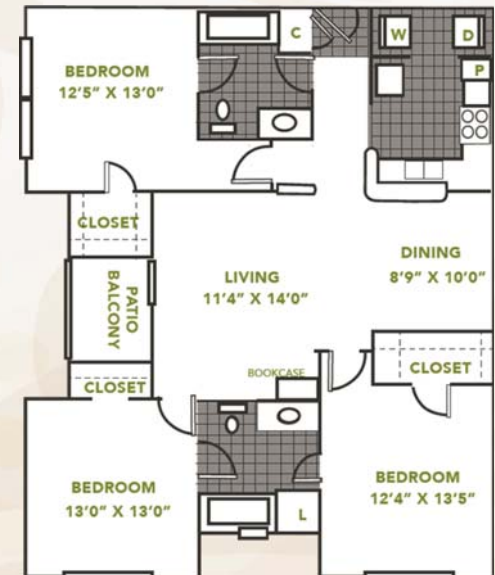
RENT \_\_\_\_\_ 2 Bedroom / 2 Bath  
 DEPOSIT \_\_\_\_\_ 1,010 Sq. Ft.\*

# THE AMBASSADOR



RENT \_\_\_\_\_ 2 Bedroom / 2 Bath  
 DEPOSIT \_\_\_\_\_ 1,039 Sq. Ft.\*

# THE DOWNING



3 Bedroom / 2 Bath  
 1,207 Sq. Ft.\*